

BLUE PETRA 2

40m FAST CREW BOAT



BLUE PETRA SDN BHD

B-07-03, LEVEL 3,
GARDEN SHOPPE@ONE CITY,
JALAN USJ 25/1A,
47650 SUBANG JAYA, SELANGOR.
TEL : +603-8011 4554
E-mail : enquiry@bluepetra.com.my



PRINCIPAL PARTICULARS

Port Of Registry : Port Kelang
Call Sign : 9M2924
IMO No. : 9971111
Official No. : 337750
Year Built : 2023
Class : RINA
Type : Fast Crew Boat
Flag : Malaysia

DIMENSION

Length Overall : 40.40 m
Breadth Moulded : 7.90 m
Depth Moulded : 3.60 m
Draft Moulded : 1.70 m
GRT : 288 mt
NRT : 85 mt

PERFORMANCE

Speed : 27.0 knots – 29.0 knots
Type of fuel : Marine Gas Oil

CARGO CAPACITIES

Deck Strength : 2.0 Ton/m²
Clear Deck Area : 120 m²
Fuel Oil : 70 m³
Fresh Water : 20 m³

PROPULSION SYSTEM

Main Engine : 3 x 1450 BHP @ 2300 rpm Caterpillar C32 Acert
Main Generator : 2 x Caterpillar C4.4 86ekW, 415V/50Hz
Bow Thruster : 1 x 1 Ton Thrust
Propulsion : 3 x 5 Bladed FPP of Nickel Aluminum Bronze
Rudders : 2 nos

DECK EQUIPMENT

Anchor Winch : Electrical Hypac
Anchors : High Holding Power type
Chains : Steel wire rope (length and breaking strength as required by Class) c/w 12.5m x 14mm dia. stud link chain

ACCOMMODATIONS

Berths : 10 berths for marine officer/crew
Passenger Seating : 80 persons
*All cabins are fully air-conditioned

FIRE FIGHTING EQUIPMENT

External

Fire monitor : 1 units fitted on the port side aft (stern) on the main deck capacity 6000 L/hr
Fire pump : 600m³/hr)

Internal

Fixed System in E/R : Aerosol Fire Suppression System
Fire Detection System : Fire Alarm Panel ASM Syncro
Emergency Fire Pump : Desmi 50m³/hr Electric Motor Driven
Fireman's outfit : 2 units complete with breathing device
CO2 FIFI System : 6 x 45kg PAS

NAVIGATIONAL /COMMUNICATION EQUIPMENTS

GMDSS : 2 set Sailor 6222 VHF
SSB : 1 set Sailor 6310 MS/HF
SART : 2 x McMurdo S5 Rescue SART
EPIRB : 1 x McMurdo E8 Smartfind
Inmarsat C : 1 x Sailor 6210 Inmarsat-C SSAS
VHF Radio : 1 x Furuno/ FM-8800S
Portable VHF Radio: 3 x Motorola XiR P6620i, 5W, I.S. type c/w remote speaker mic
Satellite Phone/fax : 1 x KVH TracPhone mini-VSAT System Model V7HTS
Navtex Receiver : 1 x JMC Model NT-1800 GMDSS Paperless
X-Band Radar : 1 x Simrad Argus 12U/6X X-Band Radar System
Echo Sounder : 1 x Simrad S2009 Echo Sounder 9" Display
GPS : 1 x Simrad P3007 IMO GPS
Gyro compass : 1 x Simrad HS80A
Autopilot : 1 x AP70MK2 Professional Autopilot controller
Speed Log : 1 x Simrad SAL R1A Easy Tank
Magnetic Compass : 1 x Automatic Deck Mount Compass 140mm
AIS : 1 x Simrad V5035 AIS Class A Transponder

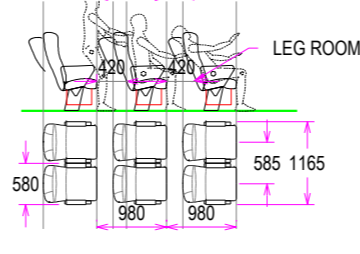
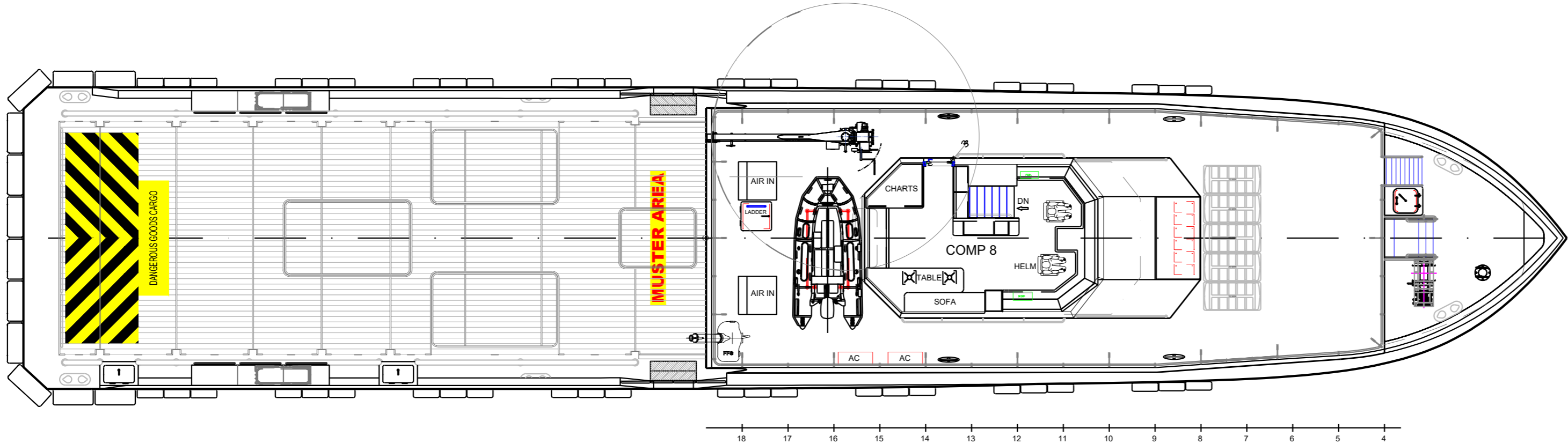
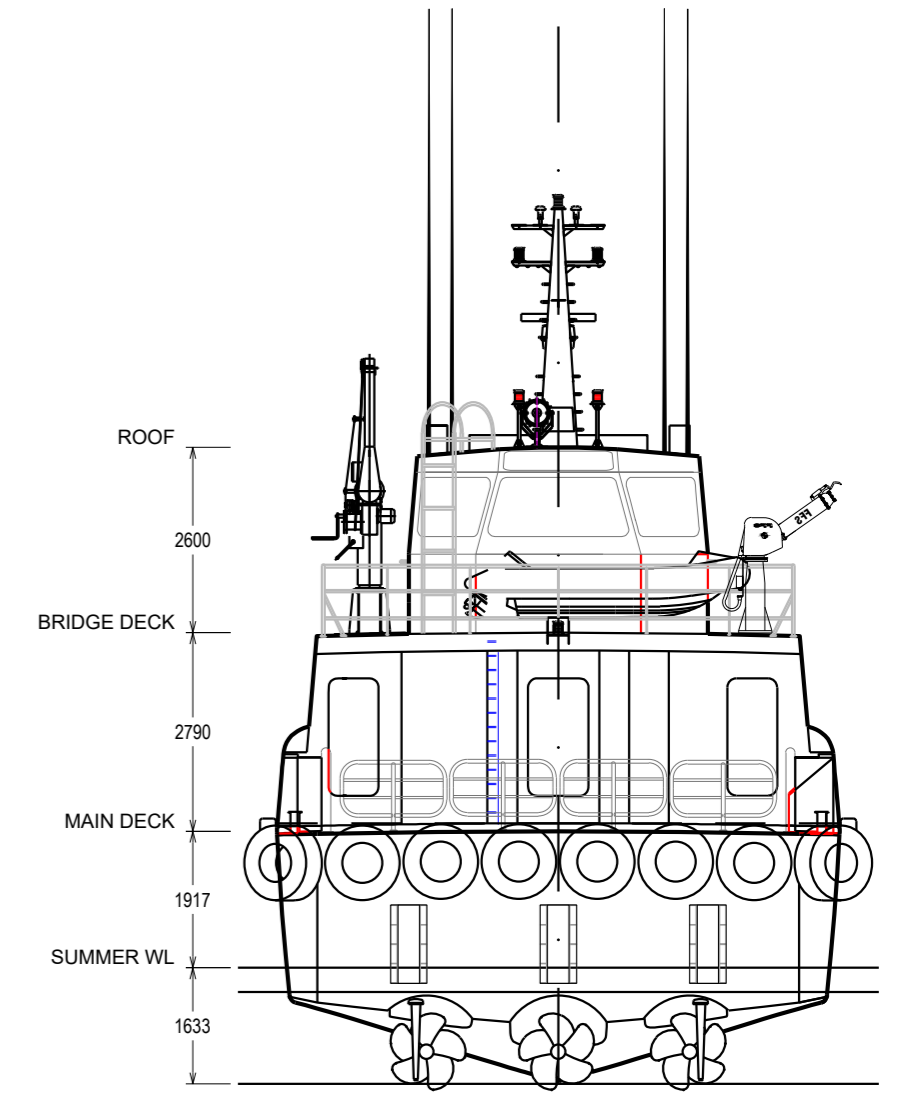
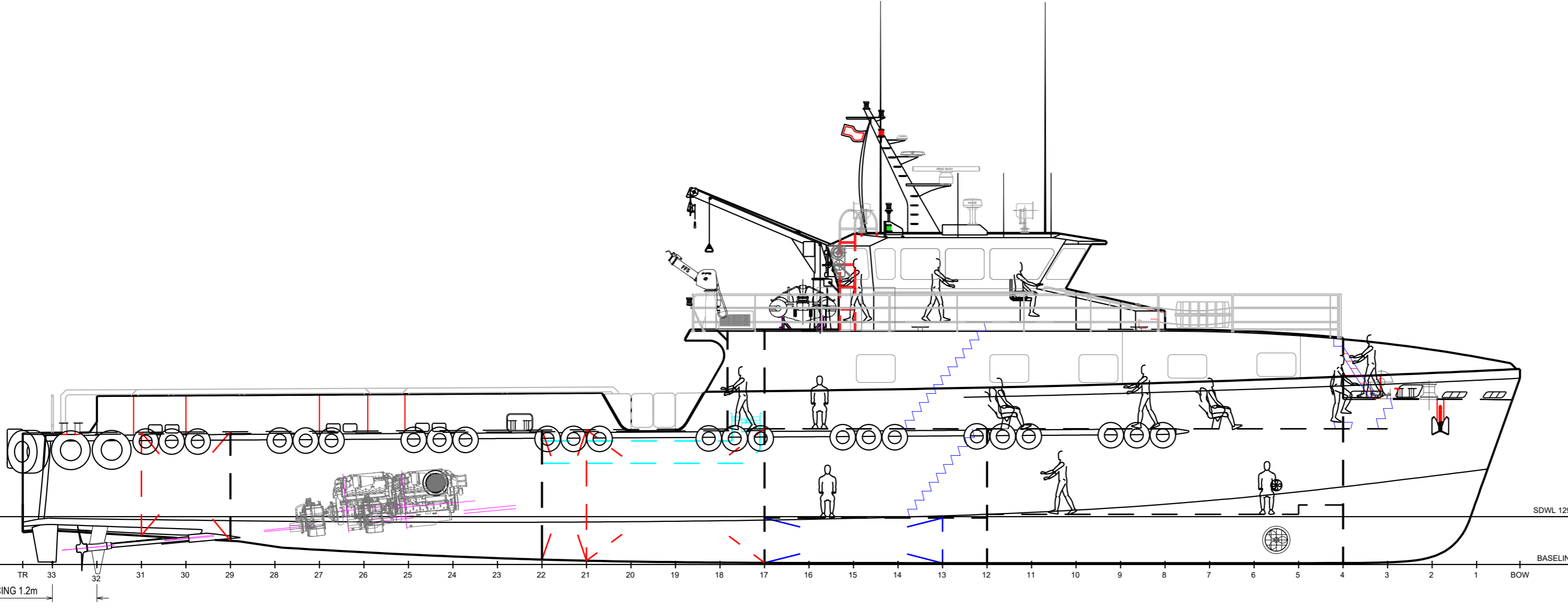
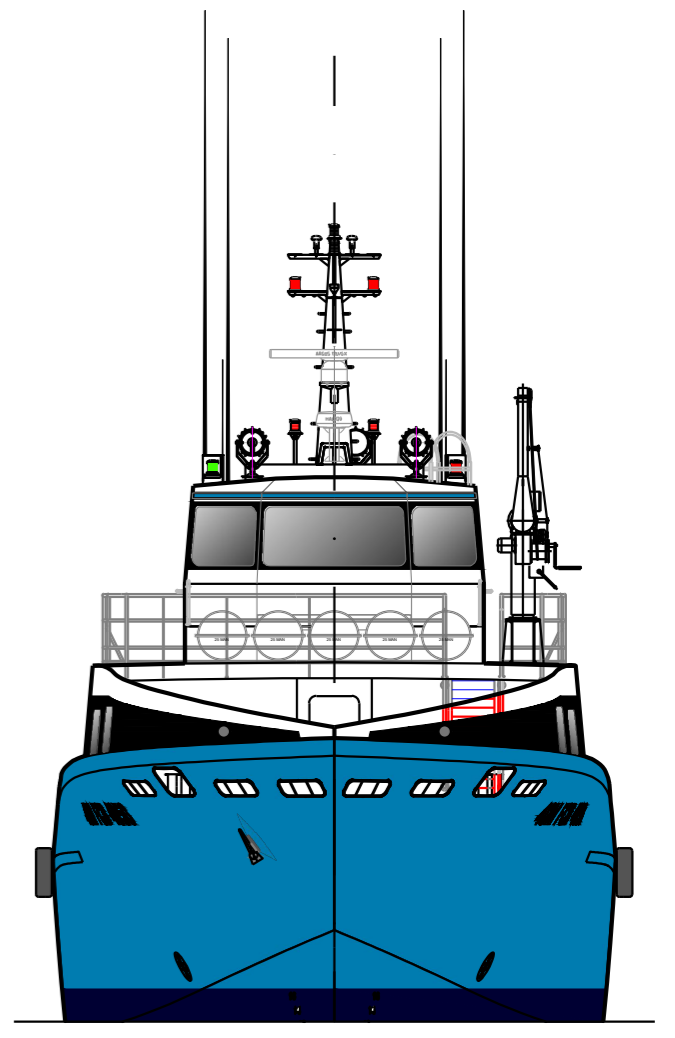
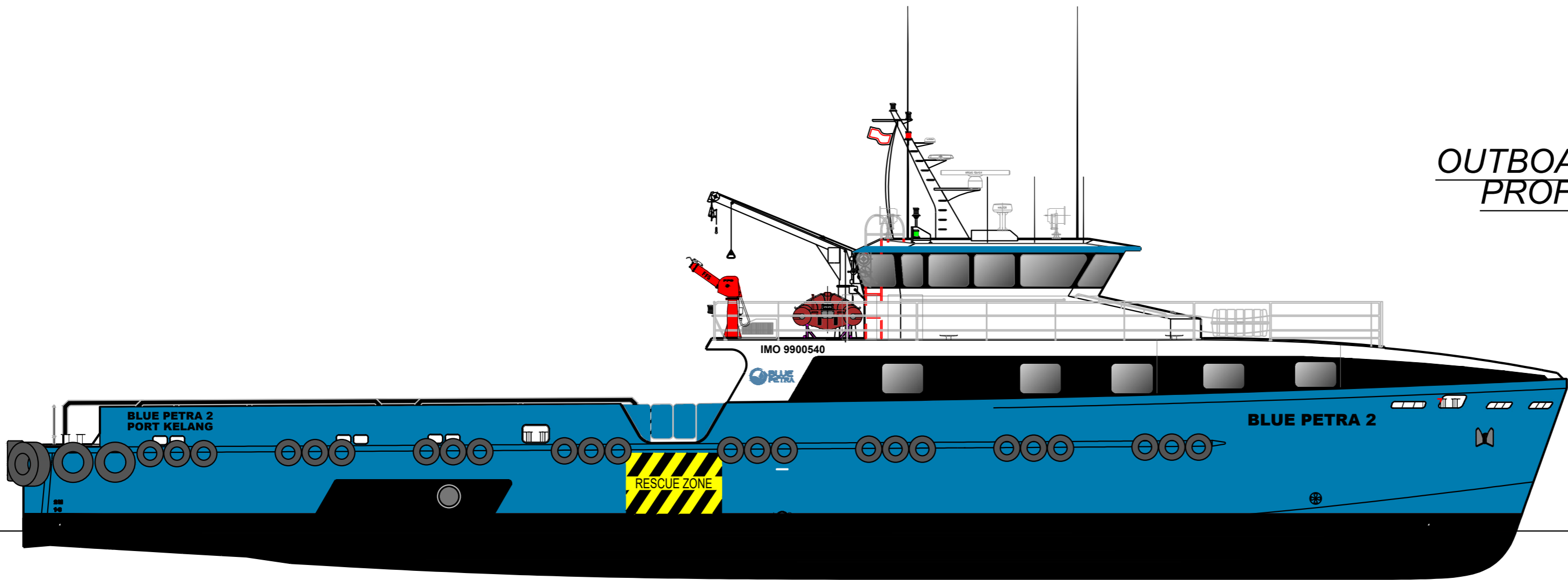
LIFE SAVING APPLIANCE

Search Lights : 2 x 1000W
Liferafts : 4 x 30 Men Haining HNF-A30 SOLAS B PACK
Lifebuoys : 4 pcs
Life jackets : 88 pcs
EEBD : 2 units
Line Throwing Apparatus : 4 shot Schermully type
Scrambling net : 2 units (2m x 2m) 12mm nylon
Rescue boat : DSB 3.9SR, Semi-rigid, alu hull SOLAS Rescue Boat, 6 Pax with Yamaha F25D, 25HP OBD

AUXILLIARY SYSTEM

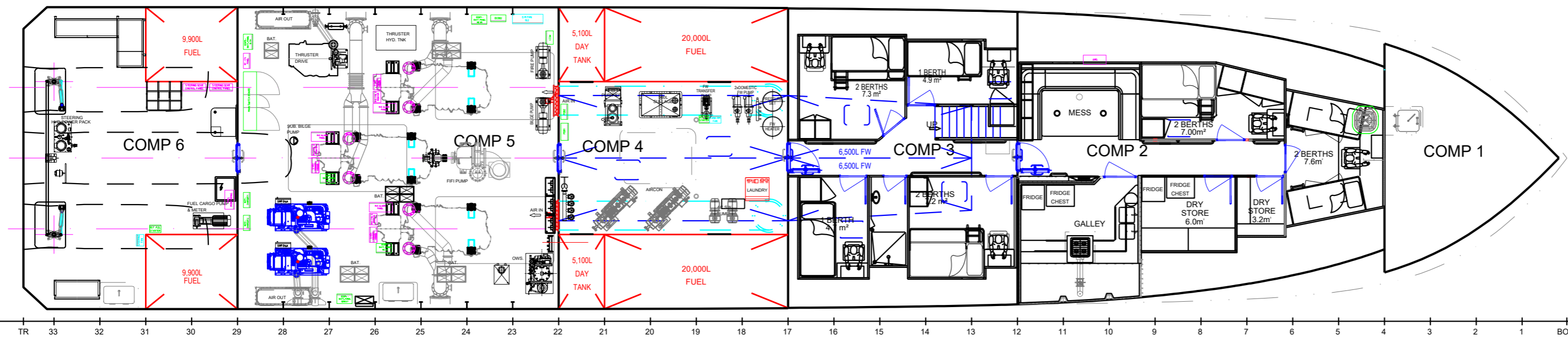
Rescue Zone : Port & Starboard at Main deck
Oily Water Separator : MTE MS-05 type, Capacity 0.5 Cu.m/hr

OUTBOARD PROFILE



| PRINCIPAL PARTICULARS | | |
|-----------------------|-------------|--------|
| LENGTH O.A. | m | 40.4 |
| BEAM MOULDED | m | 7.9 |
| DEPTH MOULDED | m | 3.6 |
| GRT | | 288 |
| DRAFT, MAX BL | m | 1.7 |
| DRAFT, MAX PROP | m | 1.9 |
| CLEAR DECK | m' | 120 |
| FUEL OIL | m' | 70 |
| FRESH WATER | m' | 30 |
| BLACK WATER | m' | 0.5 |
| PASSENGERS | | 80 |
| CABINS / BERTHS | 6 / 10 | |
| DECK STRENGTH | t/m' | 2.0 |
| MAX DEAD WEIGHT | t | 105 |
| PROPULSION | bhp | 4350 |
| BOW THRUSTER | apr. thrust | 1 x 1t |
| SPEED | | |
| AT 100% MCR, 35 dwt | kts | 29.0 |
| AT 85% MCR, 35 dwt | kts | 27.0 |

FOR CONSTRUCTION



| | | | |
|--------------|---|---------------------|------------|
| TITLE | | GENERAL ARRANGEMENT | |
| PROJECT | 40M FAST CREW BOAT (FCB) | ROLL NO. | H733 |
| DRAWING REF. | S799-15-001_K | SHEET NO. | 1 OF 1 |
| SCALE | 1:110 OR AS SHOWN | DATE | 10/01/2022 |
| DRAWN | A. RADFORD | CHECKED | A. TAYLOR |
| APPROVED | A. TAYLOR | DATE | 10/01/2022 |
| REV | H733 ISSUE FOR H733 | DATE | 04/07/2022 |
| REV | UPDATE WINDOW ARRANGEMENT AND PARTICULARS | DATE | 23/05/2022 |
| REV | REVISION DETAILS | DATE | DRN |
| | | CHECKED | APPROVED |

THIS DRAWING AND ALL INFORMATION CONTAINED WITHIN REMAIN THE SOLE PROPERTY OF SOUTHERLY DESIGNS PTY LTD. NO PART MAY BE COPIED, MODIFIED OR REPRODUCED IN ANY MANNER WITHOUT THE PRIOR PERMISSION OF SOUTHERLY DESIGNS PTY LTD.