

BLUE PETRA 1

40m FAST CREW BOAT



BLUE PETRA SDN BHD

B-07-03, LEVEL 3,
GARDEN SHOPPE@ONE CITY,
JALAN USJ 25/1A,
47650 SUBANG JAYA, SELANGOR.
TEL : +603-8011 4554
E-mail : enquiry@bluepetra.com.my



PRINCIPAL PARTICULARS

Port Of Registry : Port Kelang
Call Sign : 9M2709
IMO No. : 9900540
Official No. : 337712
Year Built : 2022
Class : RINA
Type : Fast Crew Boat
Flag : Malaysia

DIMENSION

Length Overall : 40.40 m
Breadth Moulded : 7.90 m
Depth Moulded : 3.60 m
Draft Moulded : 1.70 m
GRT : 288 mt
NRT : 85 mt

PERFORMANCE

Speed : 27.0 knots – 29.0 knots
Type of fuel : Marine Gas Oil

CARGO CAPACITIES

Deck Strength : 2.0 Ton/m²
Clear Deck Area : 120 m²
Fuel Oil : 70 m³
Fresh Water : 20 m³

PROPULSION SYSTEM

Main Engine : 3 x 1450 BHP @ 2300 rpm Caterpillar C32 Acert
Main Generator : 2 x Caterpillar C4.4 86ekW, 415V/50Hz
Bow Thruster : 1 x 1 Ton Thrust
Propulsion : 3 x 5 Bladed FPP of Nickel Aluminum Bronze
Rudders : 2 nos

DECK EQUIPMENT

Anchor Winch : Electrical Hypac
Anchors : High Holding Power type
Chains : Steel wire rope (length and breaking strength as required by Class) c/w 12.5m x 14mm dia. stud link chain

ACCOMMODATIONS

Berths : 10 berths for marine officer/crew
Passenger Seating : 80 persons
*All cabins are fully air-conditioned

FIRE FIGHTING EQUIPMENT

External

Fire monitor : 1 units fitted on the port side aft (stern) on the main deck capacity 6000 L/hr
Fire pump : 600m³/hr)

Internal

Fixed System in E/R : Aerosol Fire Suppression System
Fire Detection System : Fire Alarm Panel ASM Syncro
Emergency Fire Pump : Desmi 50m³/hr Electric Motor Driven
Fireman's outfit : 2 units complete with breathing device
CO2 FIFI System : 6 x 45kg PAS

NAVIGATIONAL /COMMUNICATION EQUIPMENTS

GMDSS : 2 set Sailor 6222 VHF
SSB : 1 set Sailor 6310 MS/HF
SART : 2 x McMurdo S5 Rescue SART
EPIRB : 1 x McMurdo E8 Smartfind
Inmarsat C : 1 x Sailor 6210 Inmarsat-C SSAS
VHF Radio : 1 x Furuno/ FM-8800S
Portable VHF Radio: 3 x Motorola XiR P6620i, 5W, I.S. type c/w remote speaker mic
Satellite Phone/fax : 1 x KVH TracPhone mini-VSAT System Model V7HTS
Navtex Receiver : 1 x JMC Model NT-1800 GMDSS Paperless
X-Band Radar : 1 x Simrad Argus 12U/6X X-Band Radar System
Echo Sounder : 1 x Simrad S2009 Echo Sounder 9" Display
GPS : 1 x Simrad P3007 IMO GPS
Gyro compass : 1 x Simrad HS80A
Autopilot : 1 x AP70MK2 Professional Autopilot controller
Speed Log : 1 x Simrad SAL R1A Easy Tank
Magnetic Compass : 1 x Automatic Deck Mount Compass 140mm
AIS : 1 x Simrad V5035 AIS Class A Transponder

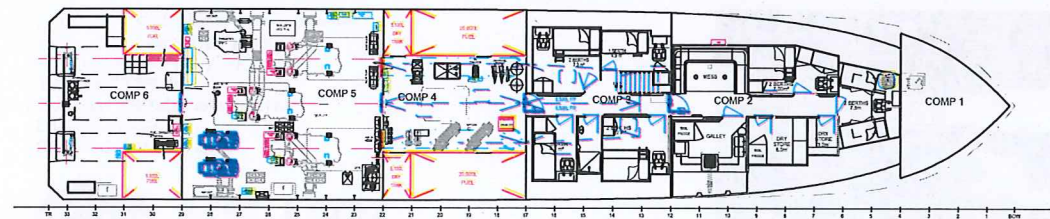
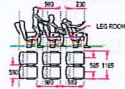
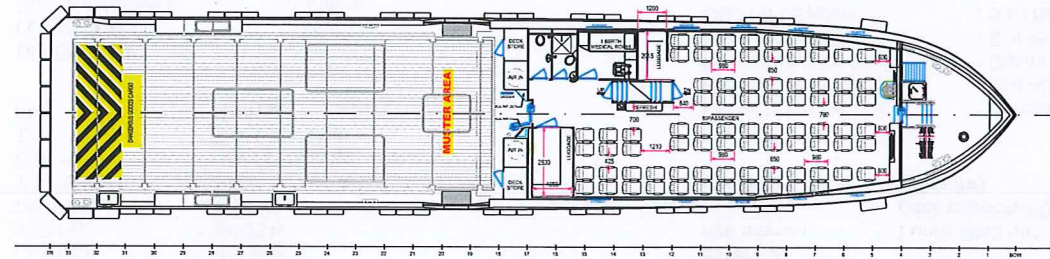
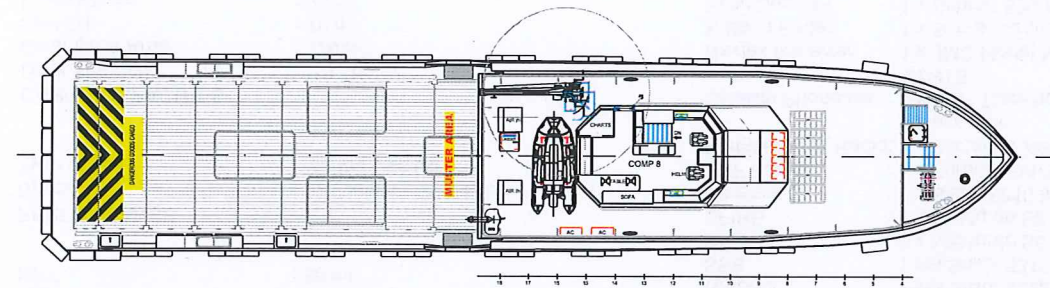
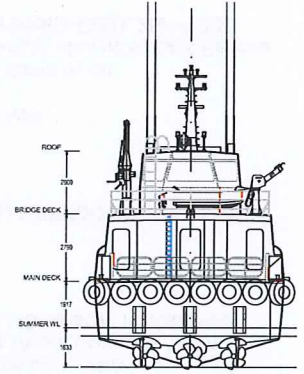
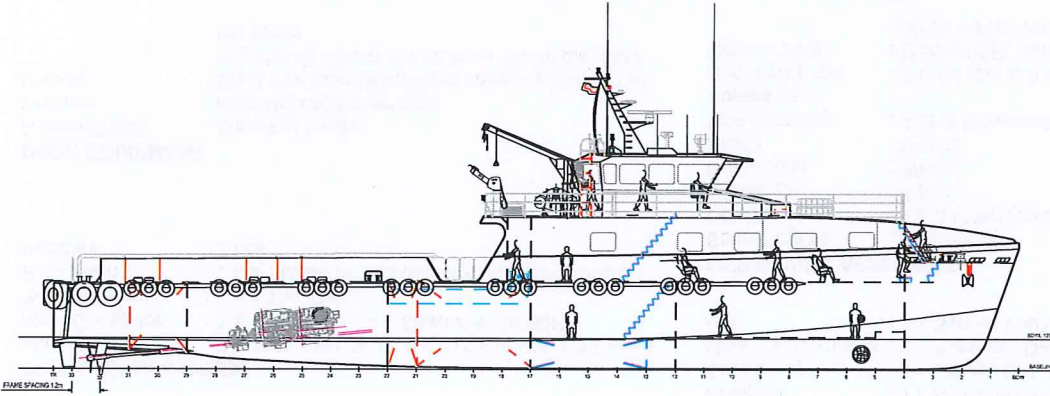
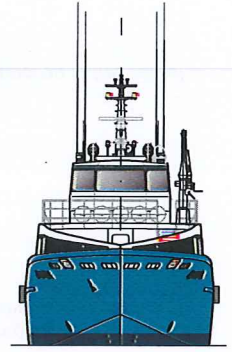
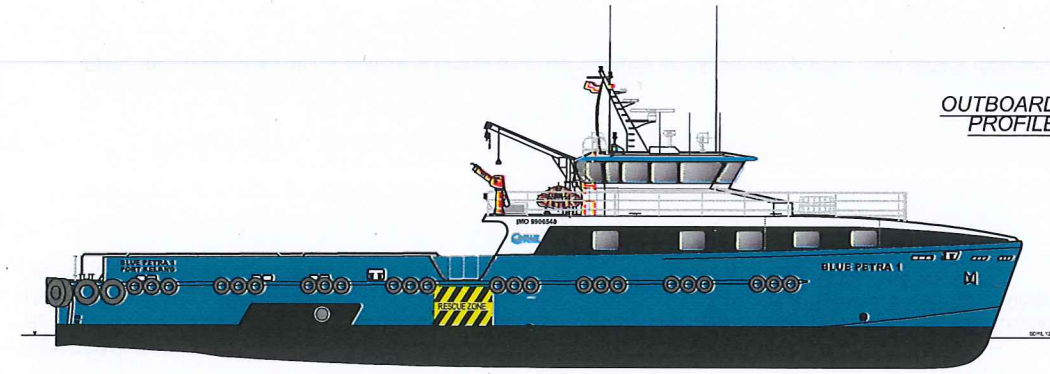
LIFE SAVING APPLIANCE

Search Lights : 2 x 1000W
Liferafts : 4 x 30 Men Haining HNF-A30 SOLAS B PACK
Lifebuoys : 4 pcs
Life jackets : 88 pcs
EEBD : 2 units
Line Throwing Apparatus : 4 shot Schermully type
Scrambling net : 2 units (2m x 2m) 12mm nylon
Rescue boat : DSB 3.9SR, Semi-rigid, alu hull SOLAS Rescue Boat, 6 Pax with Yamaha F25D, 25HP OBD

AUXILLIARY SYSTEM

Rescue Zone : Port & Starboard at Main deck
Oily Water Separator : MTE MS-05 type, Capacity 0.5 Cu.m/hr

OUTBOARD PROFILE



PRINCIPAL PARTICULARS		
LENGTH O.A.	m	40.4
BEAM MOULDED	m	7.9
DEPTH MOULDED	m	3.6
GRT		288
DRAFT, MAX BL	m	1.7
DRAFT, MAX PROP	m	1.9
CLEAR DECK	m ²	120
FUEL OIL	m ³	70
FRESH WATER	m ³	30
BLACK WATER	m ³	0.5
PASSENGERS		80
CABINS / BERTHS		6 / 10
DECK STRENGTH	ψm ²	2.0
MAX DEAD WEIGHT	t	105
PROPULSION	bhp	4350
BOW THRUSTER	aprt, thrust	1 x 11
SPEED		
AT 100% MCR, 35 dwt	kts	29.0
AT 85% MCR, 35 dwt	kts	27.0

FOR APPROVAL

SOUTHERLY DESIGNS
© Copyright the Plans Division, Southern Marine, Australia 2022. All rights reserved. All other trademarks are the property of their respective owners.

Strategic Marine
STRATEGIC MARINE
 100% AUSTRALIAN OWNED & OPERATED

TITLE: GENERAL ARRANGEMENT

PROJECT: 40m FAST CREW BOAT (FCB) DRAWING NO: H726

ISSUE: 1 OF 1

DATE: 15/10/2022

NO: S799-15-001_J-D2

DESIGNED BY: A. RADFORD	CHECKED BY: A. TAYLOR	DATE: 15/10/2022
DRAWN BY: A. TAYLOR	DATE: 15/10/2022	DATE: 15/10/2022

THIS DRAWING AND ALL INFORMATION CONTAINED HEREIN ARE THE SOLE PROPERTY OF SOUTHERLY DESIGNS PTY LTD. NO PART MAY BE COPIED, REPRODUCED OR TRANSMITTED IN ANY FORM OR BY ANY MEANS, WITHOUT THE EXPRESS PERMISSION OF SOUTHERLY DESIGNS PTY LTD.

NO	DESCRIPTION	DATE	BY	CHECKED	DATE	BY	APPROVED
1-01	UPDATE WHOLE ARRANGEMENT AND PARTICULARS	15/10/2022	A. RADFORD	E. HUGHES	15/10/2022	A. TAYLOR	LEW
1-02	ISSUED FOR MTS	16/10/2022	A. TAYLOR	E. HUGHES	16/10/2022	A. TAYLOR	LEW
REV	REVISION DETAILS	DATE	BY	CHECKED	DATE	BY	APPROVED